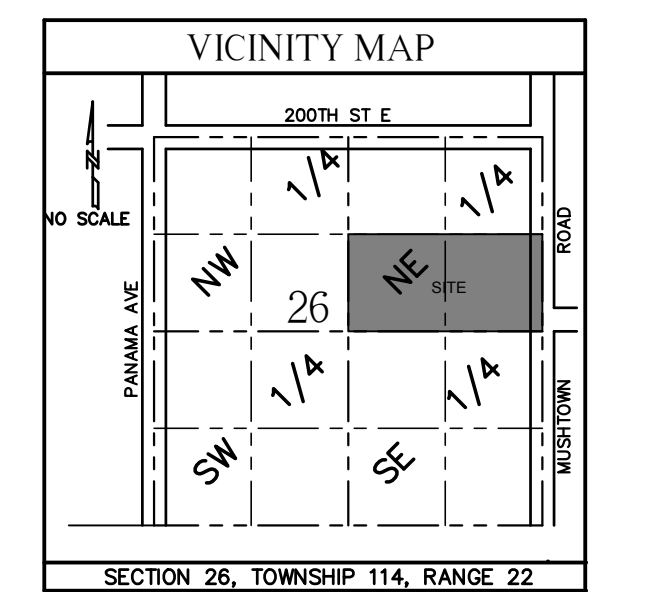
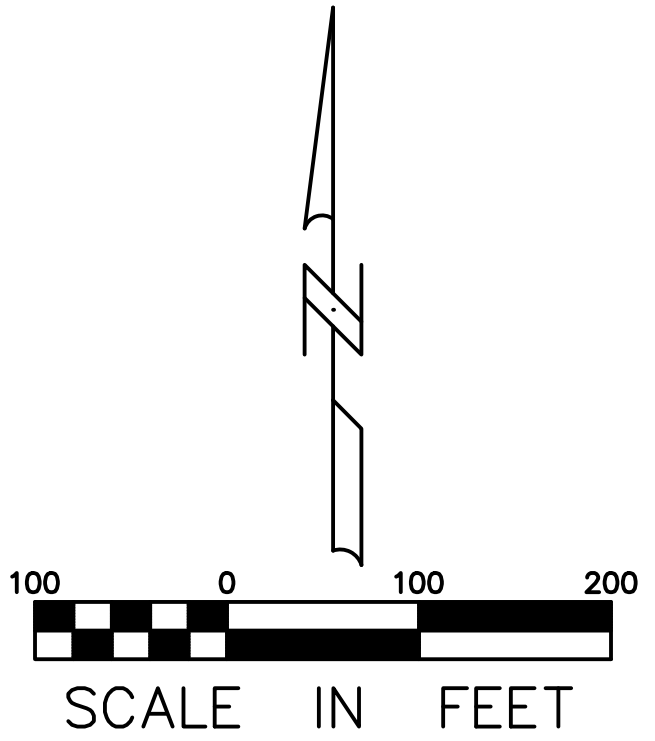
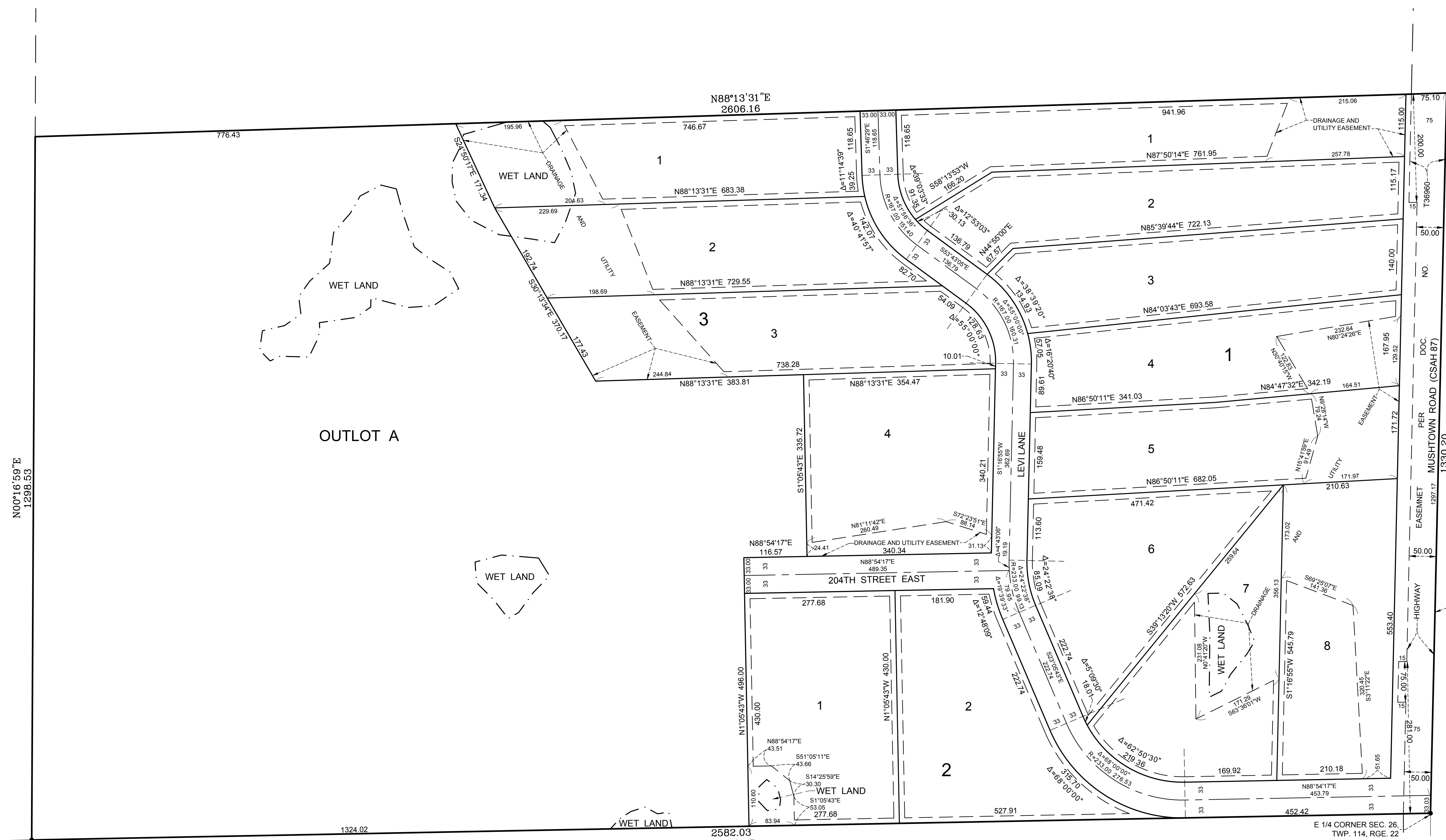


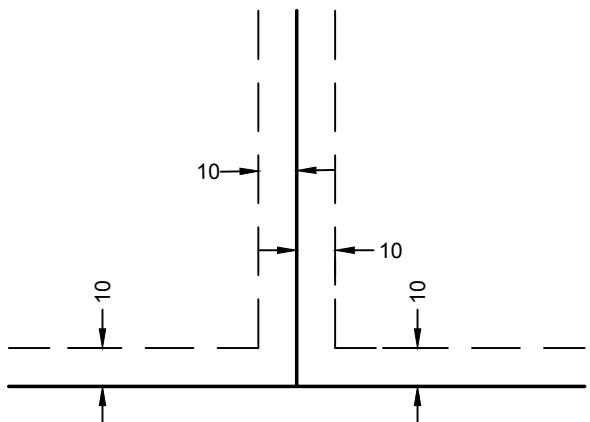
HARVEST BLUFFS



N00°16'59"E
1298.53'

OUTLOT A

DRAINAGE AND UTILITY EASEMENTS
ARE SHOWN THUS



BEING 10 FEET IN WIDTH AND ADJOINING
SIDE LOT LINES, UNLESS OTHERWISE
INDICATED, AND 10 FEET IN WIDTH AND
ADJOINING STREET RIGHT-OF-WAY
LINES AND REAR LOT LINES, UNLESS
OTHERWISE INDICATED.

THE EAST LINE OF SECTION 26, TOWNSHIP 114, RANGE 22
HAS AN ASSUMED BEARING OF S01°16'55"W

NO MONUMENT SYMBOL SHOWN ON THE PLAT INDICATES
1/2 INCH BY 14 INCH IRON MONUMENT TO BE SET WITHIN
1 YEAR OF RECORDING THIS PLAT, MARKED BY LICENSE
NUMBER 19086.

○ DENOTES 1/2" BY 14" IRON MONUMENT
SET MARKED BY LICENSE NUMBER 19086,
UNLESS OTHERWISE SHOWN.

● DENOTES 1/2" IRON MONUMENT FOUND,
UNLESS OTHERWISE SHOWN.

PROBE ENGINEERING COMPANY, INC.
CONSULTING ENGINEERS,
PLANNERS and LAND SURVEYORS